



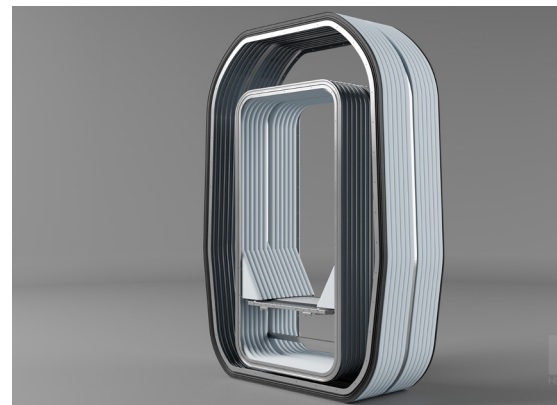
HÜBNER Fairing System

Corrugated Bellows with Rectangular Configuration

- Fairings are a type of corrugated bellows providing a flush connection to the contour of the rail vehicle.
- Gangways can be equipped with fairings that provide improved aerodynamics
- The resulting reduction in air resistance allows energy savings of up to 4%

Special features:

- Provides a smooth and virtually flat surface
- No seams visible at the corners
- Less visible wear
- Facilitates advanced configurations, curves, reduced space requirements
- Superior sound insulation (a closed interior bellows + a closed wind fairing system = 40 dB)



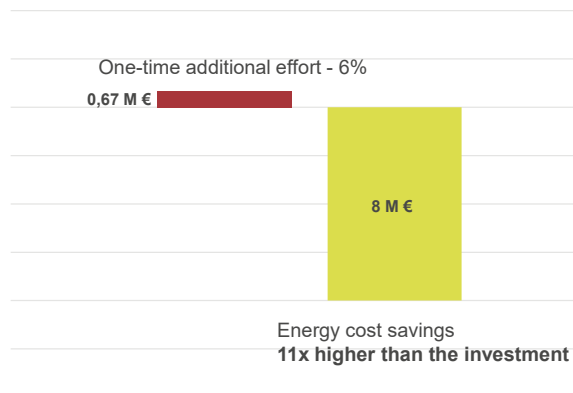
Mobility | Making mobility happen.

www.hubner-group.com • info@hubner-group.com

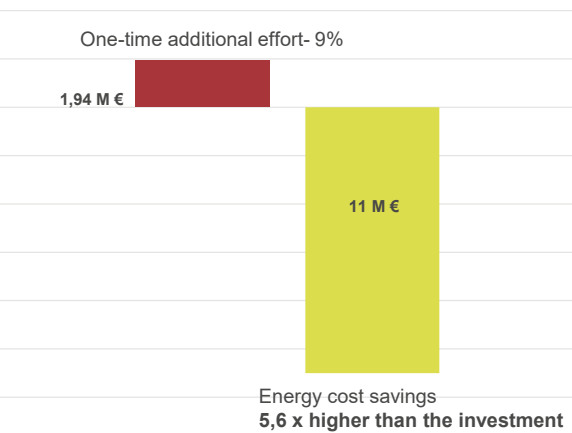


Energy cost-saving potential

High-speed train
with Jacobs bogie – 450 ICD



High-speed train
Without articulation (conventional) – 800 ICD



HÜBNER GmbH & Co. KG
Heinrich-Hertz-Straße 2
34123 Kassel

Tel. +49 561 998-0
Fax +49 561 998-1515

info@hubner-group.com
www.hubner-group.com